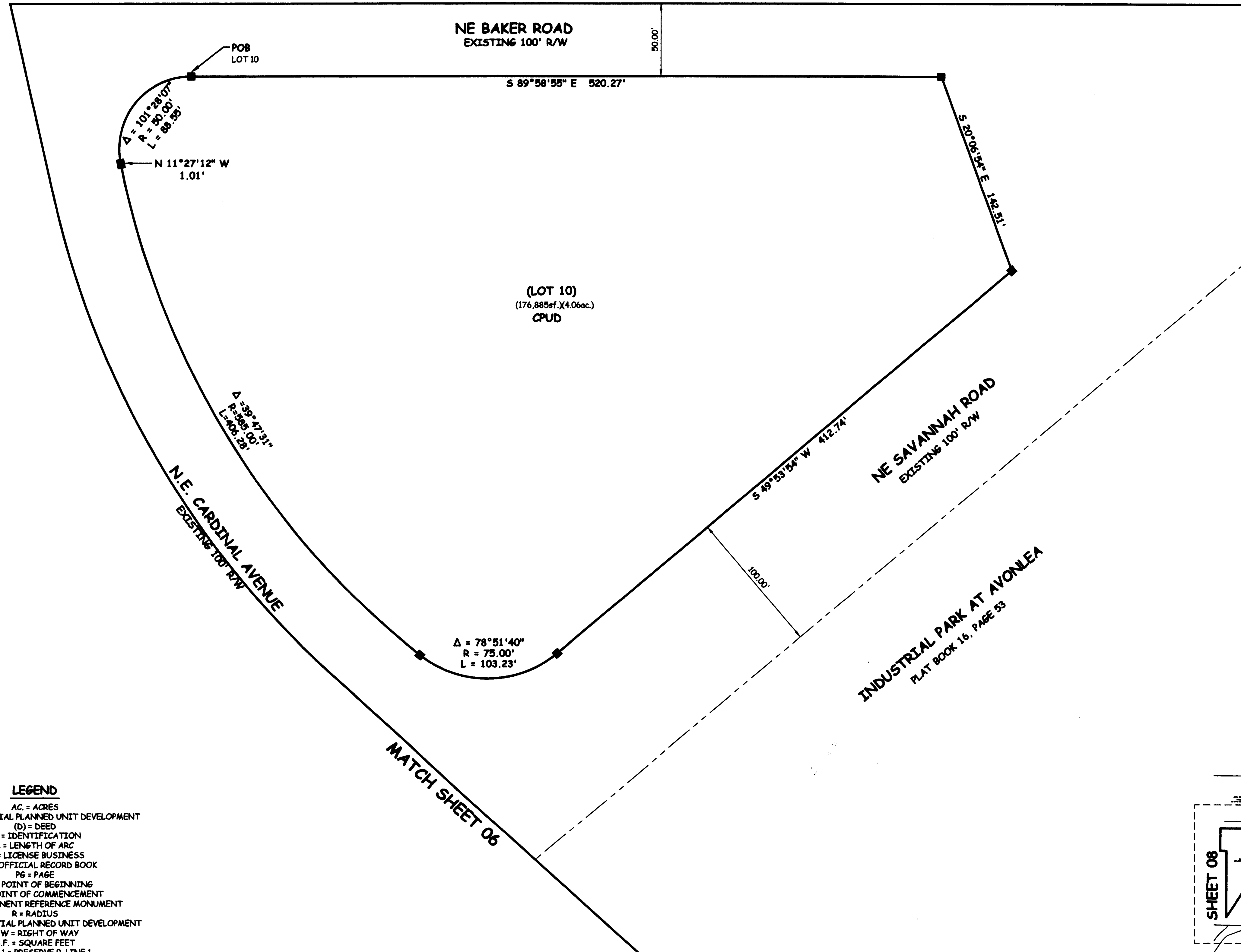


# NEW AVONLEA P.U.D.

LYING IN A PORTION OF SECTIONS 28 AND 29, TOWNSHIP 37 SOUTH, RANGE 41 EAST,  
CITY OF STUART, MARTIN COUNTY, FLORIDA.

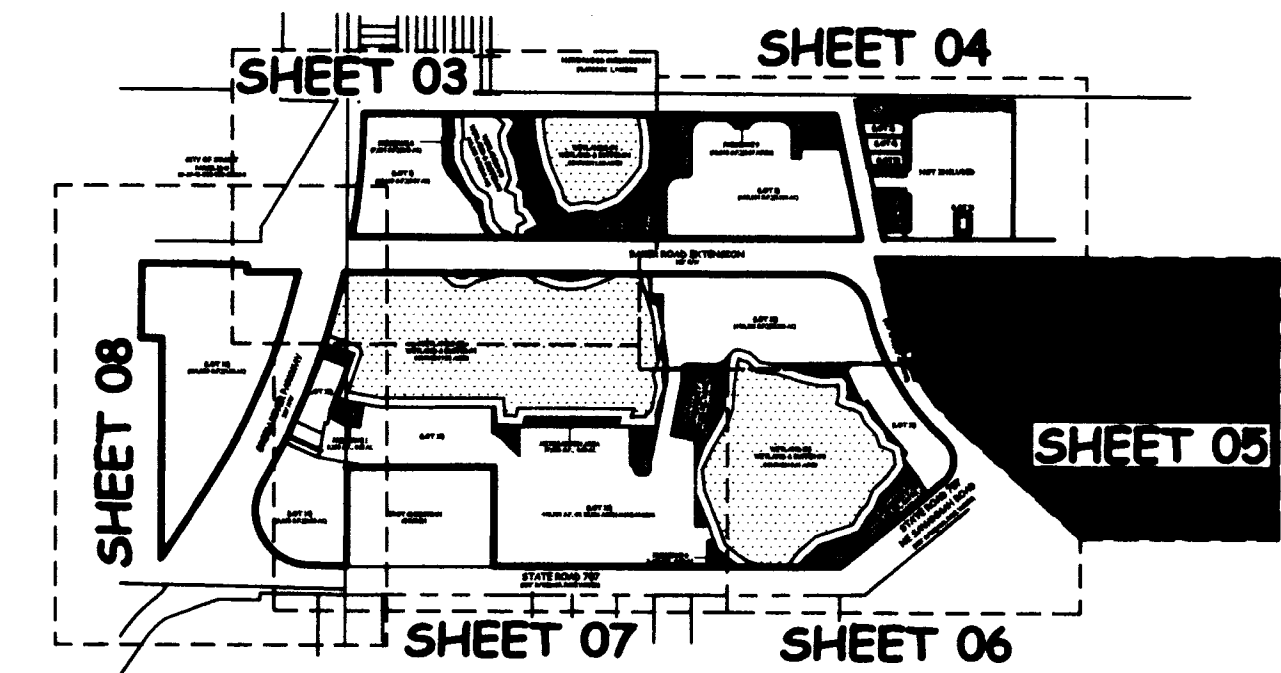
PLAT BOOK: 17  
PAGE: 25

MATCH SHEET 04

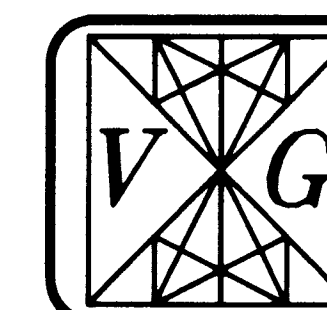


### LEGEND

- AC = ACRES
- CPUD = COMMERCIAL PLANNED UNIT DEVELOPMENT
- (b) = DEED
- ID = IDENTIFICATION
- L = LENGTH OF ARC
- LB = LICENSE BUSINESS
- ORB = OFFICIAL RECORD BOOK
- PG = PAGE
- POB = POINT OF BEGINNING
- POC = POINT OF COMMENCEMENT
- PRM = PERMANENT REFERENCE MONUMENT
- R = RADIUS
- RPUD = RESIDENTIAL PLANNED UNIT DEVELOPMENT
- R/W = RIGHT OF WAY
- S.F. = SQUARE FEET
- P-9 L-1 = PRESERVE 9, LINE 1
- = SET 5/8" IRON ROD/CAP "VELCON LB 4942"
- = SET 4"x4" CONCRETE MONUMENT "PRM LB 4942"
- Δ = CENTRAL ANGLE OF CURVE



PLAT PREPARED BY:



**VELCON GROUP, INC.**  
ENGINEERS & SURVEYORS  
CERTIFICATE OF AUTHORIZATION NO. LB 4942  
702 S.W. PORT ST. LUCIE BLVD.  
PORT ST. LUCIE, FLORIDA 34953  
PHONE (772) 879-0477, FAX (772) 871-6659  
Web Site: www.velcongroup.com

SHEET 5 OF 8